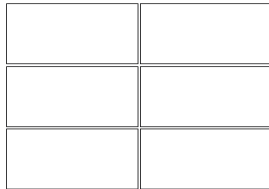


## DUNES

**DESCRIPTION:** Slab **TEXTURE:** HD<sup>2</sup> Sand Dunes

### PALLET OVERVIEW



### NOTES

In order to obtain a more realistic appearance to natural stone, wet cast (Stonedge collection) slabs are intended to have a slightly larger variance in their dimensions than dry cast slabs. See Notes for dimensional tolerances on page 31.

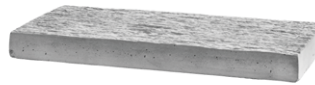
See page 31 to 33 for more technical information.

See page 28 for more information about applications.

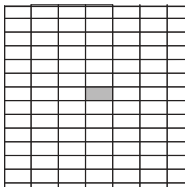
Specifications per pallet		Imperial	Metric
Cubing		<b>92.04 ft<sup>2</sup></b>	8.55 m <sup>2</sup>
Approx. Weight		2 306 lbs	1 046 kg
Number of rows		8	
Coverage per unit		1.92 ft <sup>2</sup>	0.18 m <sup>2</sup>
Coverage per row		11.51 ft <sup>2</sup>	1.07 m <sup>2</sup>
Linear coverage per row	Depth	5.88 lin. ft	1.79 lin. m
	Length	11.75 lin. ft	3.58 lin. m



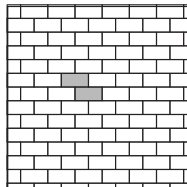
Unit dimensions	in	mm	Units/pallet
Height	2 ¼	57	48 units
Width	11 ¾	298	
Length	23 ½	597	



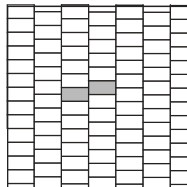
01 | Linear pattern



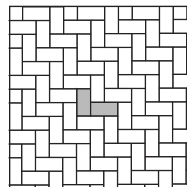
02 | Linear pattern



03 | Linear pattern



04 | Herringbone pattern

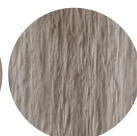


Patterns are for design inspiration only. The installer is responsible to calculate & purchase the correct amount of material.

Chocolate Brown



Rock Garden Brown



Riviera

