

ADVANCED
Building Products Inc.



Mortairvent® is a mortar deflection and ventilation mat that acts as a pressure equalized airspace between the structural envelope and the exterior cladding. Some rainscreens on the market today do not have the mortar deflection aspect, so be aware when choosing the proper rainscreen products.

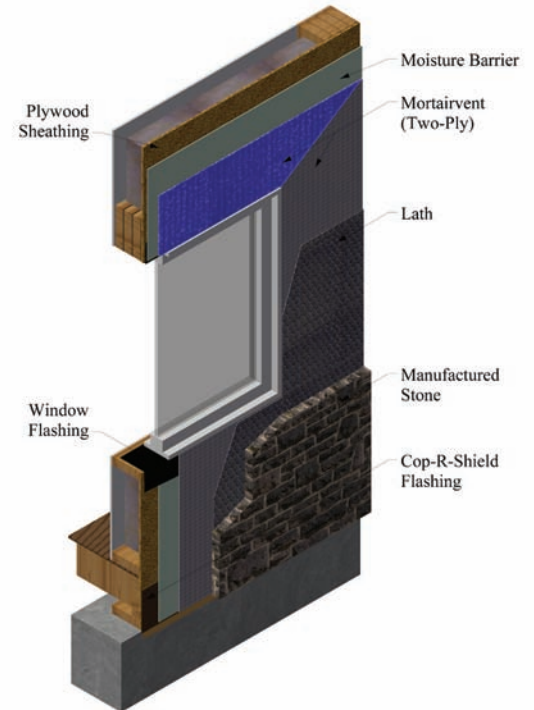
Mortairvent® is used behind stucco, manufactured stone, EIFS, brick, and natural stone. The core of Mortairvent® is manufactured from recycled polypropylene, which is spun into an entangled geomatrix and qualifies for L.E.E.D. credits.

Available in a 6mm or 10mm thicknesses, these two sizes provide the proper void for drainage and ventilation, while not thick enough to risk compressive issues.

Permeability is very important when considering a rainscreen product. Positive pressure will drive moisture through the first line of defense, the water-shedding surface, but negative pressure will drive air and moisture from the inside of the building out through the exterior wall system. Mortairvent® is designed to handle moisture coming from both the warm side and cold side of the wall.

Flashing and a water-resistive barrier should always be considered part of an exterior wall system. Designed to prevent water from entering the stud wall cavity, house wraps are also designed to allow air passage from the warm side of the wall to the cold side of the wall. The difference in air pressure across the exterior cladding causes infiltration of air and water on windward facades. The equalization of this pressure difference neutralizes the forces that draw water into the assembly. *Mortairvent® is not intended to replace the building paper.* The Mortairvent® performs like a breathable shell for buildings. Once installed, Mortairvent® drives rainwater in the direction of low air pressure meaning the void space created by Mortairvent®, along with gravity, allow the moisture to *drain not remain.*

When choosing a rainscreen for use with masonry related walls, Mortairvent® comes with a filter fabric laminated to the polypropylene. It is very important to have the filter fabric when dealing with a scratch coat application. The filter fabric will allow moisture to pass through without the scratch coat clogging the drainage channel. There are other rainscreen products on the market with the same geomatrix, but no filter fabric. These types of rainscreens are not recommended when dealing with any wall system that calls for a scratch coat. The filter fabric must be adhered to the outside of the geomatrix material.



P.O. Box 98, Springvale, ME 04083
Tel: 1-800-252-2306 or 1-207-490-2306
Fax: 207-490-2998
E-mail: info@advancedflashing.com

www.advancedflashing.com

Installation Instructions for Manufactured Stone:

step 1

Apply Cop-R-Shield flashing and then a weather resistant barrier over the wall sheathing.

step 2

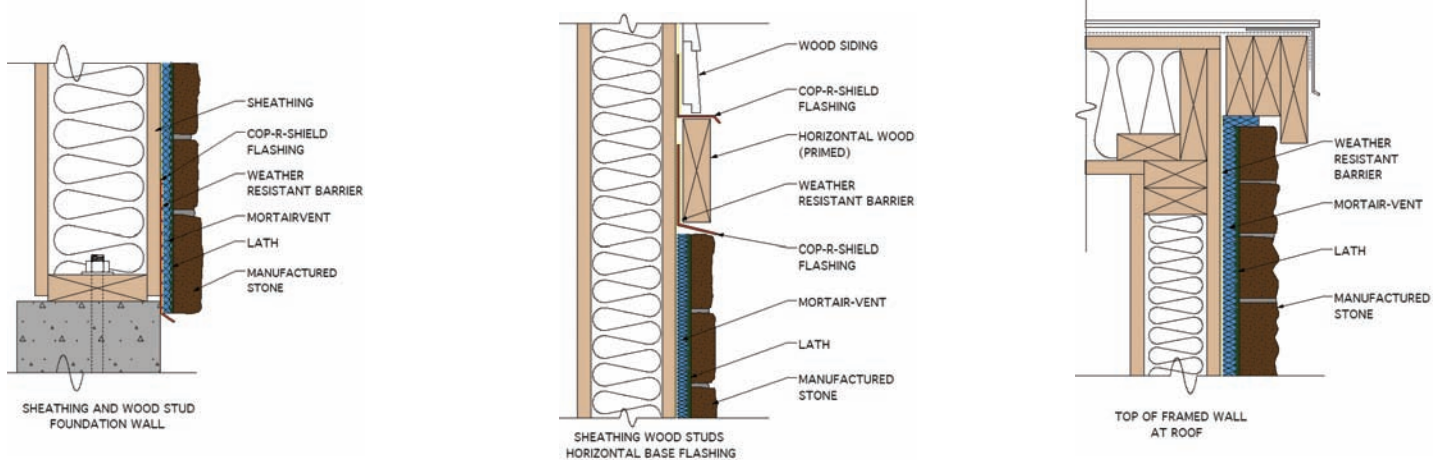
Install Mortairvent® after windows and doors have been properly installed and flashed using Advanced Wind-O-Wrap. Start at the base of the wall and unroll Mortairvent® from left to right with the flap down and the matrix side against the weather resistant barrier. On the bottom course only, fold the flap around the matrix and tuck it against the weather resistant barrier. This will ensure that insects cannot enter the air channel. Nail or staple every three square feet.

step 3

Unroll the next course in the same manner as the previous course. Butt the edges of the new roll to the existing one in place without overlapping. Pull the flap over the previous (shingle style) and staple.

step 4

Apply metal lathe and cladding over Mortairvent® per manufacturers' installation instructions.



Installation Instructions for Stucco Applications:

step 1

Apply Cop-R-Shield flashing and then a weather resistant barrier over the wall sheathing. Note: Some regions may require two weather resistant barriers for stucco applications. Check local codes for more information.

step 2

Install Mortairvent® after windows and doors have been properly installed and flashed using Advanced Wind-O-Wrap. Start at the base of the wall and unroll Mortairvent® from left to right with the flap down and the matrix side against the weather resistant barrier. On the bottom course only, fold the flap around the matrix and tuck it against the water resistive barrier. This will ensure that insects cannot enter the air channel. Nail or staple every three square feet.

step 3

Unroll the next course in the same manner as the previous course. Butt the edges of the new roll to the existing one in place without overlapping. Pull the flap over the previous (shingle style) and staple.

step 4

Apply metal lathe and cladding over Mortairvent® per manufacturers' installation instructions.

